

# Spring Bass Flies

---

A Four-Stage Plan

# Four phases of Spring bass behavior

- End of Winter
- Pre-Spawn
- Spawning
- Post-Spawn



# End of Winter

- Warming trends in early February
- Water temperature rises toward 50
- Fish move in and out of mid-depth water
- Cold water dictates small, slow presentations



# Pick dark, small sinking flies



Death to Crappie: size six Clouser minnow variation

Krystal Bugger size 4

Stick to size 6 and size 4

Use black, dark olive, or brown

Tie sparsely

Weight heavier than standard



# Pre-Spawn Pattern #1 50-60 degrees

- Stud bass move into 4 to 8 foot staging areas
- Same flies as earlier, but bigger and more color
- Add floater/divers on sink tip lines

**Jig Hook Clouser**



**M5**



**Hackle Belly Minnow**



**XR Diver**



# Pre-Spawn Pattern #2

- Sow bass on points and moving up creeks
  - Big, dark flies
  - Use sink-tip line
  - Go slow



# Spawning Season: 60 degrees

- Early spawners are passive
  - Flies must look like an egg predator such as a salamander or crawfish
  - Flies must cast accurately, land softly, sink quickly, be weedless, and sit hook point up on the bottom.
  - Fly must sit in the bed and move without being moved
  - Rabbit strips, rubber legs, marabou add motion

**VBS Lizard**



**Liz Junior**



**Rabbidad**



**Grim Reaper**



**Hairy Fodder**



# Spawning Season: 65 degrees

- Fish get more aggressive as spawn progresses
  - Add floater/divers and bream imitations to mix

**NS Diver**



**LSU Diver**



**EP Redear**



**Rattle Belly**



# Spawning Season: 70 degrees

- Late spawners may get spooky
  - Small flies become more effective on beds

Goober bug



Hellcraw



# Post-Spawn

- Fish feed aggressively to gain weight lost in spawning
- Or not
- Fish are moving on routes to deeper water
- Poppers, floater/divers, streamers

**Deer Hair Frog**



**Foam Popper**



**4M**



# Post-Spawn

- Bream imitations around bream bedding areas

EP Redear



Fire Tiger Hackle Belly



# Post-Spawn

- Good time for bream/bass flies
  - sizes 8 and 10

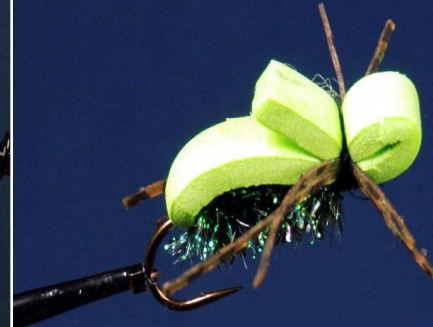
**Goober Bug**



**Hellcraw**



**Top Spider**



# Fab Four Fly Recipies

- DTC Clouser
- Liz Junior
- NS Diver
- Goober Bug

# DTC Clouser Minnow



**Hook:** Mustad 3407 or EC 413 size 6 or 4

**Thread:** Unithread 6/0 flame orange

**Eyes:** Red lead dumbbells, small

**Belly and Wing:** black bucktail or calf tail

**Flash:** Flashabou Silver Holgraphic

# Liz Junior



- **Hook:** E413 size 1/0
- **Thread:** 6/0 to match color
- **Tail:** Zonker Strip, 1 ½ to 2 inches
- **Rattle:** 4 mm glass (optional)
- **Body:** KF Chenille, doubled and twisted
- **Legs:** Barred Crazy Legs
- **Eyes:** plain lead dumbbell small
- **Weedguard:** 80-lb. mono

# NS Diver



- **Thread:** .005 mono
- **Hook:** Stinger, size 2 or 4
- **Tail:** Zonker strip
- **Legs:** Crazy legs, barred
- **Collar:** deer body hair, flared
- **Flotation device:** 3mm foam disc
- **Body:** deer body, spun and trimmed
- **Eyes:** 1/8" dome, set in Fabric Fusion
- **Weedguard:** 80 lb mono

# Goober Bug



- **Hook:** 4XL nymph, size 8 or 10
- **Thread:** 6/0 to match body color
- **Tail and legs:** Crazy Legs, barred
- **Body:** Medium KFC, doubled and twisted



A Production of

 **Gulf &  
Ozark Flies**

[www.goflies.com](http://www.goflies.com)

[goflies@consolidated.net](mailto:goflies@consolidated.net)